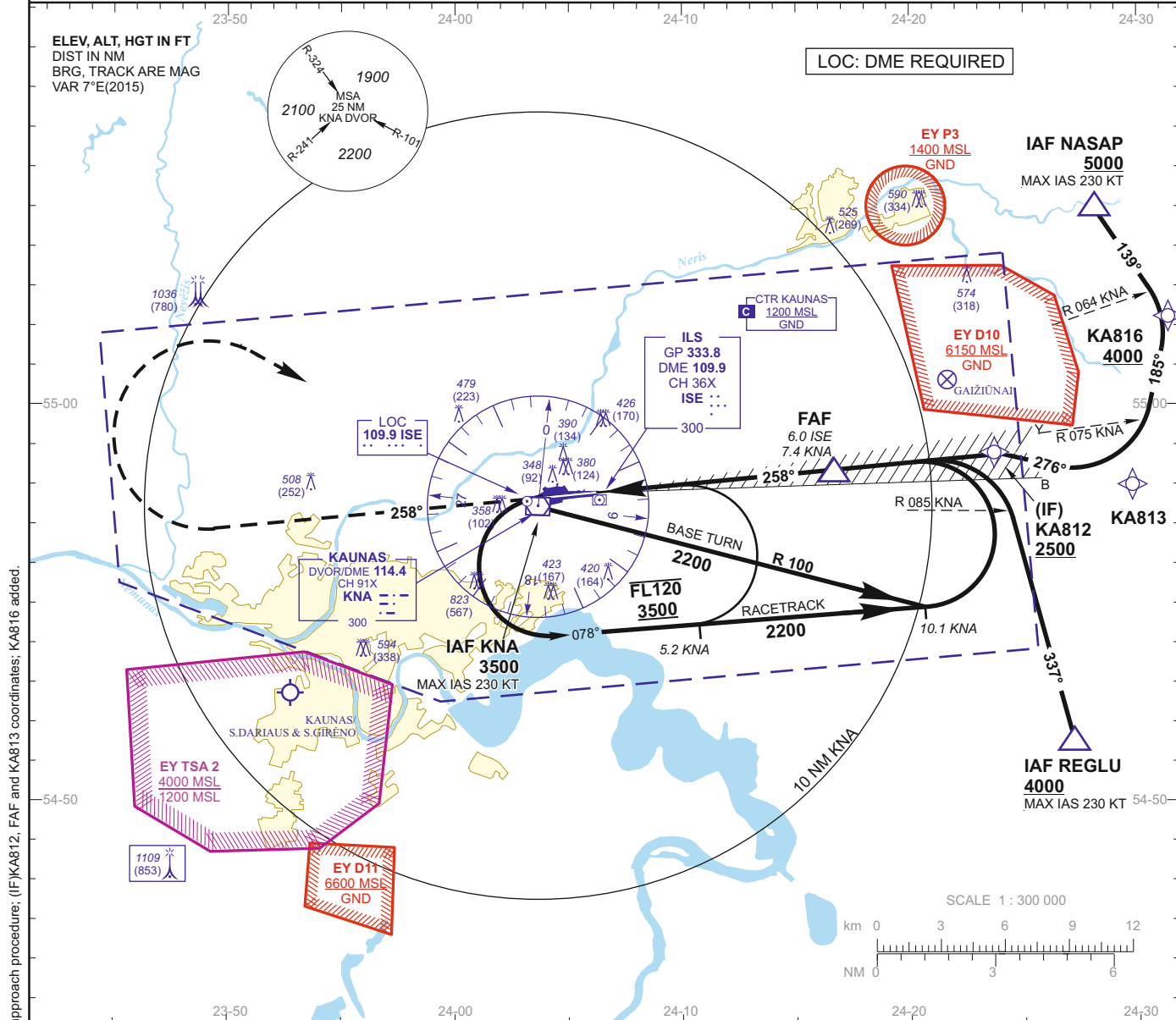


INSTRUMENT APPROACH  
CHART - ICAOAERODROME ELEV 256  
HEIGHTS RELATED TO  
THR RWY 26 - ELEV 256TWR 124.200  
118.500  
ATIS 129.050KAUNAS  
ILS or LOC RWY 26

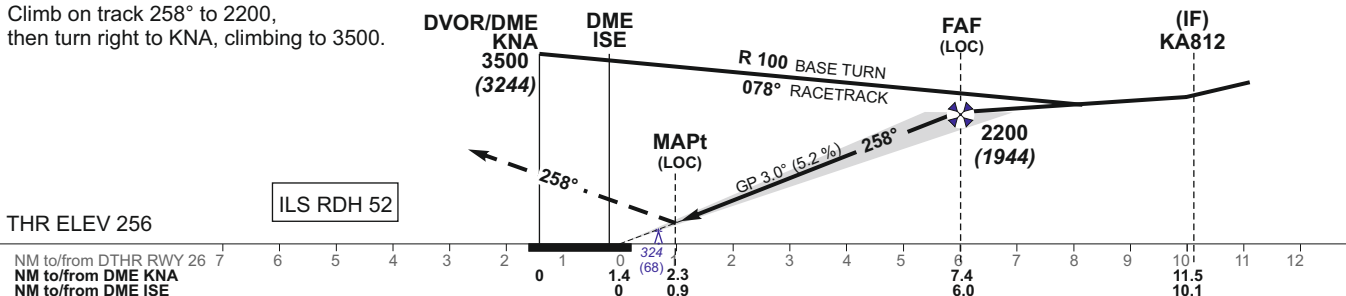
## MISSED APPROACH PROCEDURE

TRANSITION ALT 5000

Climb on track 258° to 2200,  
then turn right to KNA, climbing to 3500.

THR ELEV 256

ILS RDH 52



OCA(OCH)		A	B	C	D	DIST DME ISE				5	4	3	2	
STRAIGHT-IN APPROACH	ILS CAT I	461 (205)	471 (215)	481 (225)	491 (235)	Altitude				1890	1570	1260	940	
	ILS CAT II	369 (113)	386 (130)	402 (146)	415 (159)	Height				(1634)	(1314)	(1004)	(684)	
	LOC	610 (354)												
CIRCLING		see EYKA-AD-2.24-40 - 1				LOC : timing not authorized for defining the MAPt								
Remark: DME ISE coverage - at least coverage of azimuth angle guidance sector. Zero range is indicated at DTHR.						GS		Kts	80	100	120	140	160	180
						FAF-MAPt 5.1 NM		min:sec	3:49	3:03	2:33	2:11	1:55	1:42
						Rate of descent		ft/min	415	520	625	730	835	940
						For data tabulation see verso								

KAUNAS  
RWY 26

AERONAUTICAL DATA TABULATION

ILS or LOC INSTRUMENT APPROACH from IAFs(KNA, NASAP, REGLU)	
FIX/POINTS	COORDINATES
<b>NASAP</b> (IAF) - BRG 235.41° / 15.74 NM KNA	55 04 57.2N 024 28 10.6E
<b>REGLU</b> (IAF) - BRG 287.26° / 14.79 NM KNA	54 51 37.2N 024 27 23.7E
<b>KNA DVOR/DME</b> (IAF)	54 57 37.4N 024 03 59.1E
<b>KA816</b> BRG 246.98° / 16.46 NM KNA ; BRG 246.58° / 15.01 NM ISE	55 02 09.7N 024 31 27.3E
<b>KA813</b> BRG 261.89° / 14.92 NM KNA ; BRG 262.95° / 13.56 NM ISE	54 57 55.1N 024 29 51.4E
<b>KA812</b> (IF) - BRG 257.47° / 11.46 NM KNA ; BRG 258.28° / 10.09 NM ISE	54 58 44.4N 024 23 46.6E
<b>FAF</b> - BRG 257.03° / 7.37 NM KNA ; BRG 258.28° / 6.00 NM ISE	54 58 24.2N 024 16 42.0E
<b>FAP</b> - BRG 257.21° / 7.21 NM KNA ; BRG 258.28° / 5.84 NM ISE	54 58 23.2N 024 16 26.4E
<b>MAPt</b> - BRG 254.44° / 2.31 NM KNA ; BRG 258.28° / 0.94 NM ISE	54 57 58.5N 024 07 56.2E
<b>THR RWY 26</b>	54 57 54.62N 024 06 36.27E
<b>DTHR RWY 26</b>	54 57 53.80N 024 06 19.76E
<b>LOC ISE</b>	54 57 45.0N 024 03 21.5E
<b>DME ISE</b>	54 57 49.0N 024 06 00.1E
Final approach (LOC) descent angle: 2.98°	